



*Great fishing at Lake Cumberland*

**DIRECTIONS:**  
*From Somerset, Ky:*

You will travel on S. #27 to Highway #90 W, turn right onto 90. You will travel on 90 for about 10 miles. Just after you pass a large billboard sign: Conley Bottom Marina, you will make a “sharp” turn right onto State Road # north1275. You will travel on 1275 for nearly 8 miles. It is a winding road and you need to observe speed limits at all times. Turn right onto # road 2393. You will see our Ravens Nest sign directly to your right, in front of you, as you make this turn. Follow the winding road until you come to Eagle Creek Dr. (there will be a large sign: Natures Estates, on your left), turn left and follow paved road all the way past the “dead end” sign. You will see our log cabin.

*From Monticello, Ky:*

You will travel on east #90 until you reach #North 1275 (this road intersects with 90 at the first light past Wal-mart. Turn left and follow the road for about 8 miles until you come to #2393. Turn Left onto 2393 (you will see the Ravens Nest sign on your left, just before you need to turn left. Follow the winding road until you come to Eagle Creek Dr. (sign: Natures Estates) turn left and follow paved road past “dead end” sign. You will see our log cabin.



*Suites' decor*

**RAVENS NEST B/B**

Up-scale, yet “Down-home”

Designed for a romantic “get-a-way”  
For spiritual refreshing

An Antique haven

You'll swear you are living in a  
“tree-house” in the forest

NO SMOKING

NO PETS

NO CHILDREN



*Kitchenettes for Jacuzzi suites*

**RAVENS NEST B/B**  
&  
**Antique Shop**



364 Eagle Creek Dr.  
Monticello, KY 42633

Phone: 606-343-0018/ Fax 0017

**Toll free: 800-651-8022**

Website: [www.ravens-nest.cc](http://www.ravens-nest.cc)

Email: [rmgrady@windstream.net](mailto:rmgrady@windstream.net)

Rates: 135.00

We have 3 suites/two with Jacuzzis/3 private baths.

Minimum 2 nights stay Memorial - Labor Day.

Handicap Friendly

We accept Visa, Mastercard checks & cash.

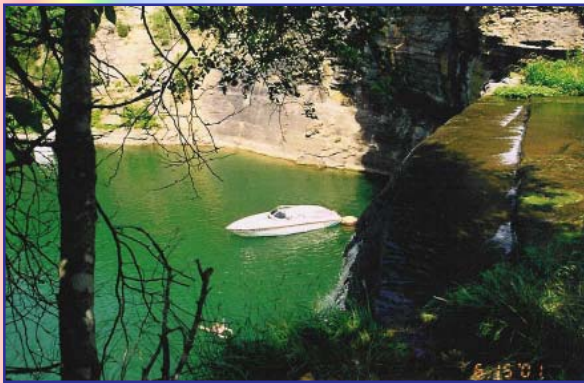
Elegant, gourmet Breakfast is served at 9 A.M.



*Inn keepers: Ranny and Denise Grady*

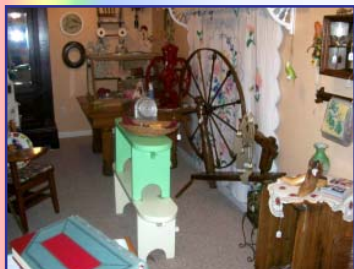
**R**avens Nest is a beautiful, log cabin nestled in the woodlands surrounding Lake Cumberland in Eastern Ky. It is 3 minutes from Conley Bottom Marina. It is a haven for married couples to come and play, relax and find spiritual refreshing. Southern-comfort hospitality is how we please our guests. Two suites have a Jacuzzi bath/ queen bed/ kitchenette. Whether it is spending time admiring a cabin full of antiques, to spending quiet mornings and evenings on our screened-in porch, you'll discover it is a "perfect" place to enjoy the natural wonders of God's Creation...deer and wild turkeys are our guests. Our parking will accommodate your boat.

*The Ravens Nest is only 3 miles from Conley Bottom Marina*



The Ravens Nest is near other marinas:

- Grider Hill Dock (606-387-5501)
- Burnside Marina (606-561-4223)
- Lee's Ford (606-636-6426)



Antique Shop

### RESERVATIONS:

Reservations can be made by using our phone (800 #), or e-mail  
Normal hours: check-in at 3:00 and check-out at 11:00 on day of departure.

### CANCELLATIONS:

We realize life "happens" and changes schedules. We charge 50% of the scheduled, planned two days stay for a cancellation (unless we can re-book those days).



Paul Bunyan Suite

### ANTIQU & GIFT SHOPS

- Isadora's (lady's fashions) (606) 348-9400
- Southern Accents (unique gifts)(606) 348-2655
- Cumberland Antique (606) 561-8622
- North # 27 Antique Mall (606) 679-1923
- Pine Cone Primitives (606) 677-1228
- Rabbit Patch Arts & Antiques (606) 340-1622

### GOLF COURSES:

- General Burnside Island (606-561-4104)
- Woodson Bend Resort (606-561-5316)
- Watsboro Hills (606-679-3113)
- Dale Hollow Golf Club (866-903-7888)
- Monticello Country Club (606-348-7321)



*Screened in porch  
(for fellowship with mankind and nature)*



Fitness Center



### SIGHTS TO VISIT

- Cumberland Falls
- Yahoo Falls
- Mill Springs Park
- Burnside Island Park
- Daniel Boone National Park/biking and hiking
- Big South Fork Recreational area